

DELTA® protects property. Saves energy. Creates comfort.

TECHNICAL DATA SHEET

DELTA®-COLDJOINT BARRIER Self-adhering Cold Joint Moisture Protection

MATERIAL

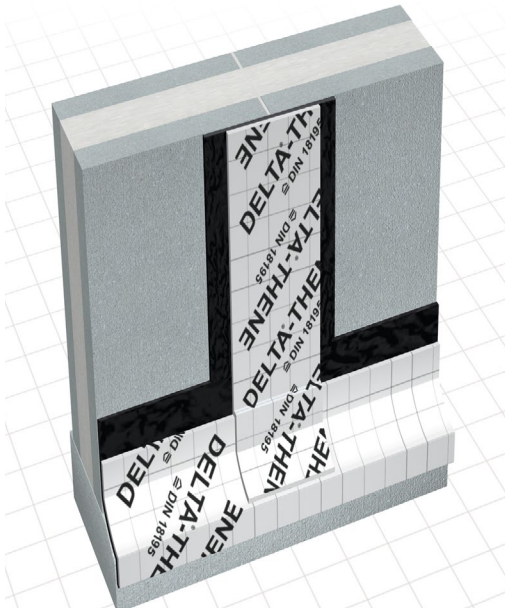
DELTA®-COLDJOINT BARRIER is a 40 mil (1 mm) thick self-adhering (peel & stick) waterproofing membrane. It consists of SBS (styrene-butadiene-styrene) modified asphalt laminated to a co-extruded high-density polyethylene film.

PROPERTIES

DELTA®-COLDJOINT BARRIER has highly aggressive adhesive properties. The product acts as a waterproof membrane to protect cold joint areas. When used in combination with DELTA®-MS, it helps to provide a high degree of security against water penetration due to fluctuating water tables in an effective foundation protection system. DELTA®-COLDJOINT BARRIER prevents inward migration of moisture that can accumulate on top of the footing, and thus helps to avoid moisture problems in basements.

APPLICATION

DELTA®-COLDJOINT BARRIER comes in easily managed 45 cm (18") wide rolls with a split release liner for easy application. It is applied below grade along the cold joint at the junction of the footing and the foundation wall. It also may be used to protect any other cold joint areas. When used in combination with DELTA®-MS and DELTA®-FOOTING BARRIER, it is a part of the complete DELTA® foundation protection system.



DELTA® products support sustainable and energy-efficient building practices, including efforts toward achieving LEED® certification (LEED® for New Construction & Major Renovations, LEED® for Core and Shell, LEED® for Existing Buildings and LEED® for Homes).

For technical support, call our technical support team at 1-888-4DELTA4 (1-888-433-5824) extension 326, or visit www.cosella-dorken.com.

Technical Data

Product name	DELTA®-COLDJOINT BARRIER	
Color	Gray	
Top surface	High-density polyethylene	
Adhesive	SBS modified asphalt	
Thickness	approx. 1 mm (40 mils)	
Elongation	200%	ASTM D412
Tensile strength (membrane)	3.4 MPa minimum	ASTM D412
Tensile strength (film)	40 MPa minimum	ASTM D882
Minimum puncture resistance (membrane)	178 N	ASTM E154
Water vapor transmission	1.6 ng/Pa s m ² (0.03 perms)	ASTM E96
Watertightness	Pass	CAN/CGSB-37.58-M86
Lap peel strength @ 4°C	1750 N/m width	ASTM D1876
Moisture absorption	0.1% maximum	ASTM D570-81
Flexibility @ -30°C	Pass	ASTM D1970
Service temperature	-40°C (-40°F) to 70°C (158°F)	
Application temperature	5°C (41°F) to 30°C (86°F) (air and sub-surface)	
Gross / net coverage per roll	10.4 m ² / 9.8 m ² (112.5 ft ² / 106 ft ²)	
Dimension (w x l)	45 cm x 22.9 m (18" x 75')	
Weight	10.5 kg (23 lb) per roll	
Storage	Transport and store upright	
Packaging	2 rolls per box	
Service life expectancy	> 25 years (at pH between 4 and 9 and temperature below 25°C (77°F)). Do not expose to UV light for more than 30 days.	
DELTA® Accessories	DELTA®-THENE PRIMER (water-based) DELTA®-THENE ADHESIVE (solvent-based)	