

DELTA® protects property. Saves energy. Creates comfort.

TECHNICAL DATA SHEET

DELTA®-MAXX / PLUS

Water-resistive Barrier & Air Barrier

MATERIAL

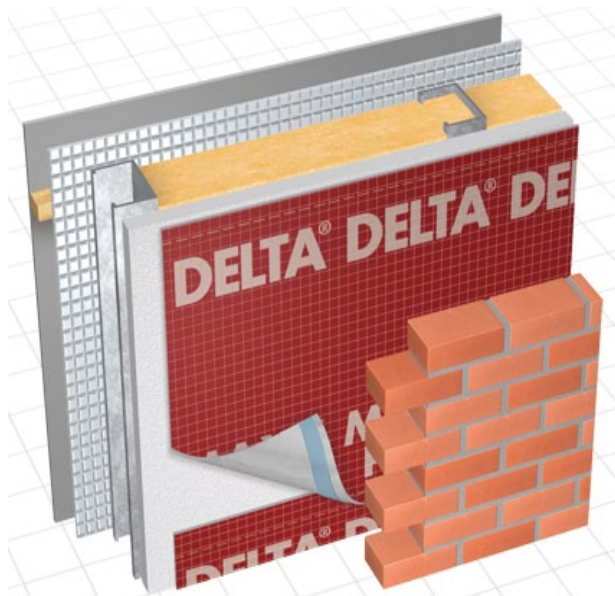
Highly tear-resistant polyester substrate with a vapor permeable waterproof polyurethane coating.

PROPERTIES

DELTA®-MAXX is designed to be very tear resistant for use in extreme wind conditions. It resists the passage of bulk (liquid) water from wind-driven rain and snow. Its good permeability and air-tightness make it an ideal air and water-resistive barrier membrane for energy-efficient construction. Its polyester substrate acts as a reservoir in extreme wetting conditions and allows excess moisture to dissipate over time via diffusion. DELTA®-MAXX is a tough, light-weight membrane that withstands the rigors of jobsites. Its performance is unaffected by surfactants.

APPLICATION

DELTA®-MAXX is installed outboard of the sheathing prior to the application of the final cladding system. DELTA® Accessories complement the WRB / Air Barrier installation. DELTA®-MAXX is also available in the PLUS version with a self-adhesive edge.



DELTA® products support sustainable and energy-efficient building practices, including efforts toward achieving LEED® certification (LEED® for New Construction & Major Renovations, LEED® for Core and Shell, LEED® for Existing Buildings and LEED® for Homes).

For technical support, call our technical support team at 1-888-4DELTA4 (1-888-433-5824) extension 326, or visit www.cosella-dorcken.com.

Technical Data

| | | |
|-------------------------------------|---|-----------------------|
| Product name | DELTA®-MAXX | |
| Color | gray | |
| Water vapor transmission | 97 g/m ² /24 h | ASTM E96-05, Proc. A |
| | 211 g/m ² /24 h | ASTM E96-05, Proc. B |
| Vapor permeance | 14 perms [grains/h/ft ² /in Hg] | ASTM E96-05, Proc. A |
| | 30 perms [grains/h/ft ² /in Hg] | ASTM E96-05, Proc. B |
| Breaking load | MD 97 lb/2in | ASTM D5035-06 |
| | CD 62 lb/2in | |
| Elongation at break | MD 54 % | ASTM D5035-06 |
| | CD 71 % | |
| Tear resistance | MD 6368 g | ASTM D1922-06a |
| | CD 8002 g | |
| Trapezoid tearing strength | MD 60 lb | ASTM D4533-04 |
| | CD 46 lb | |
| Fastener pull-through force | 278 N | ASTM D3462-03 |
| Water penetration resistance | 843 cm | CAN/CGSB-4.2 #26.3-95 |
| Water impact penetration resistance | no water passing | AATCC 42-2000 |
| Flame spread | 20 | ASTM E84-09 |
| | NFPA Class A; UBC Class I | |
| Smoke developed | 90 | ASTM E84-09 |
| | NFPA Class A; UBC Class I | |
| Air permeance | < 0.02 l/(s x m ²) @ 75 Pa | ASTM E2178 |
| Temperature range | -40 °F to +176 °F (-40 °C to +80 °C) | |
| Mass per unit area | > 5.6 oz/yd ² (190 g/m ²) | CSA A220.1-06 4.4.4 |
| Roll weight | approx. 31 lb (14 kg) | |
| Roll length | 164' (50 m) | |
| Roll width | 4' 11" (1.5 m) | |
| Maximum UV (sunlight) exposure | Always cover as soon as possible. | |
| DELTA® Accessories | DELTA®-MULTI BAND 2" x 82' DELTA®-FLEXX-BAND 4" x 33' DELTA®-THAN 310 ml cartridge | |

ICC ESR-2932 DELTA® Water-resistive Barriers

Cosella-Dörken Products Inc., 4655 Delta Way, Beamsville, Ontario L0R 1B4
1-888-4 DELTA 4, (905) 563-3255 Fax: (905) 563-5582
info@cosella-dorcken.com, www.cosella-dorcken.com

A company of the Dörken Group