

DELTA® protects property. Saves energy. Creates comfort.

DELTA®-FOXX

INSTALLATION INSTRUCTIONS

Surface Preparation

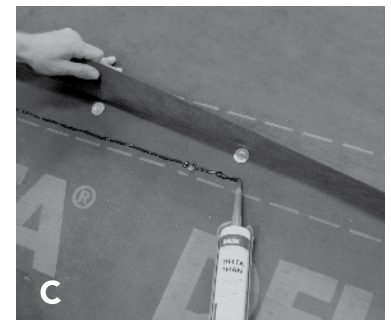
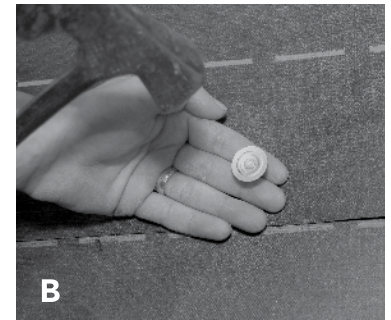
- Ensure substrate (roof deck) is swept clean and free of any debris before installing the underlayment. Repair any voids or damaged roof deck before any installation of roof underlayment begins.
- Where required by local building codes, a separate ice dam membrane must be applied along the eaves and valleys prior to installation of the DELTA®-FOXX. Always refer to the ice dam membrane manufacturer's recommended installation methods for proper application.

Installation of Roof Underlayment

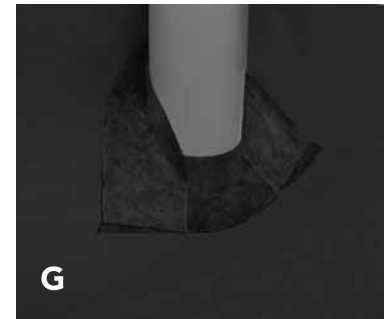
1. DELTA®-FOXX is installed as a sheathing membrane, horizontally (parallel to the eaves), starting at the eaves. The printed side must be facing up. The membrane can be run left to right, and right to left along the roof plane. On roof slopes 4:12 or greater, DELTA®-FOXX should be installed with minimum 4" (10 cm) side (horizontal) laps (line is marked on the membrane for ease of installation, see detail A), and minimum 6" (15 cm) end (vertical) laps.
2. On roof slopes between 2:12 and 4:12, DELTA®-FOXX should be installed with minimum 6" (15 cm) side laps (run top sheet along top of letters on lower sheet), and minimum 8" (20 cm) end laps.
3. Fasten DELTA®-FOXX to the roof deck with minimum 1" length nails with a minimum 1" (2.5 cm) diameter plastic or metal cap (see detail B). In all typical wind areas, install fasteners at 12" (30 cm) on center along sides and end laps. In high wind and coastal areas, install fasteners at 6" (15 cm) on center along sides and end laps. Cap nails may be either pneumatically or hand fastened.
4. For an installation with entirely concealed fasteners and highest wind resistance, best practice is to fasten only the top of the membrane, followed by adhering and sealing all side/end laps with DELTA®-THAN (permanent elastic sealing compound). Install the fasteners approximately midway between the upper edge of the material and the horizontal lap line. Apply DELTA®-THAN in a continuous 3/16" (4.8 mm) bead along entire side/end laps. Place the continuous bead roughly 1/2" (1.2 cm) underneath the overlap (see detail C). There is no approved alternative to DELTA®-THAN.

It is strongly recommended that the installation be done with entirely concealed fasteners for the best precipitation and high wind resistance, especially if any prolonged exposure to the weather is anticipated.

- All exposed fasteners must be covered by a batten or sealed over with DELTA®-MULTI-BAND.
- 5. Install DELTA®-FOXX over the drip edge at all eaves and under the drip edge at all rake edges (this may change with various roof applications).



- 6. Extend DELTA®-FOXX at least 6" (15 cm) up on sides of chimneys, vertical walls, etc. (see detail D). To ensure a secure and watertight seal, fasten the underlayment to the surface with DELTA®-THAN or DELTA®-MULTI-BAND (see detail E, F).
- 7. "X-cut" DELTA®-FOXX to fit over smaller protrusions such as plumbing vent stacks, and then fasten/seal directly to the protrusion using either DELTA®-FLEXX-BAND or DELTA®-MULTI-BAND, ensuring a secure and water-tight seal (see detail G).
- 8. Installation of the roof cladding can proceed immediately after the installation of DELTA®-FOXX. Although the product has extremely high UV-resistance, DELTA®-FOXX is not designed to be a permanently exposed final roof covering. Installation of the actual roof cladding must take place within 6 months after the installation of the underlayment or, if possible, sooner.
- 9. DELTA®-FOXX has superior strength and skid resistance. Roofing materials can be loaded directly onto the underlayment.
- 10. Patch any rips, tears, or holes in the membrane less than 2" (5 cm) in diameter with DELTA®-MULTI-BAND or DELTA®-FLEXX-BAND, centered over the tear. Patch any rips, tears, or holes larger than 2" (5 cm) in diameter with DELTA®-FOXX, cut at least 6" (15 cm) larger in diameter than the tear. Center the patch over the tear and adhere with DELTA®-THAN.
- 11. Check your local building code to ensure that the installation complies with specific local requirements.



Technical Services

Our technical support team will be happy to assist you in case you require further information. For any installation or technical questions call 1-888-4DELTA4 (433-5824).

DELTA®-FOXX meets or exceeds the requirements of ICC-ES AC188, AC48, and other building code requirements. Code approvals are listed with Quality Auditing Institute at www.qai.org. For further details visit us at www.delta-foxx.com.

ICC-ESR 2625 (icc-safe.org)

COSELLA DÖRKEN
 Cosella-Dörken Products Inc.
 4655 Delta Way
 Beamsville, Ontario
 L0R 1B4
 (905) 563-3255
 Fax: (905) 563-5582
 1-888-4 DELTA 4
info@cosella-dorken.com
www.delta-foxx.com

A company of the Dörken Group



Canadian Home Builders' Association

DELTA®-branded quality products
 manufactured by Cosella-Dörken.